



Newsletter

Issue 4 Spring Term

23rd April 2021



Dear Parents and Carers,

Welcome back to the start of the summer term, the sunshine and our gradual and long-awaited return to normality again! A huge reason for us all to be grateful and to celebrate. The children have returned happy and refreshed and are eager to be back.

I hope you found your parent consultation meeting this week both helpful and informative, in providing an opportunity to share together how your child is settling back into school, as well as to gain a clear understanding as to where they currently are in their learning.

As we are not yet at a point where we are ready to take the children out on educational visits, this term we will be enhancing the children's learning experiences with some visitors into school, you will be receiving further information about this from your child's year group leader over the next two weeks.

As always, thank you for all that you have done and are continuing to do to help us and your children through these times. It is great to see such a significant fall in the number of Covid cases in Redditch. As you meet up with family and friends to enjoy a little more sunshine this weekend, please continue to stay safe.

EARLY INTERVENTION SUPPORT CONTACT NUMBER

Louise Young 07507 497613 Louise is here to help with a variety of issues such as bedtime & morning routines, behaviour, finance, wellbeing & a host of other general issues. She is also able to signpost to other agencies to support our families.

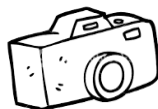


Kind Regards,

Mrs. Sallyanne Dunstan
Headteacher

Y4 LEAVERS PHOTOS

*Tempest Photography will be here
on Thursday 24th June.*



DATE REMINDERS

- Wednesday 28th April **Year 2 Victorian dress up day**
- Monday 3rd **May Bank Holiday (School Closed)**
- Monday 28th May school closes for half term and re-opens on Monday 7th June
- **Dinner bookings cut off Thursday midnight**
- **Cool milk bookings cut off Tuesday 5pm**

ATTENDANCE

Our overall attendance since re-opening on 8th March stands at **98.2%**

TEST & TRACE SUPPORT PAYMENT SCHEME

If you are on a low income and need to take time off work to care for a child while they are self-isolating (including school bubble closures) you may be eligible for financial support. **If you are eligible you will receive a £500 payment.**

Please follow the link below to see if you qualify:

<https://www.gov.uk/test-and-trace-support-payment>



Courteous & Considerate Parking

Can I please remind people to park with care, respect and consideration for our local residents. I am again beginning to receive an increasing number of complaints both regarding dangerous and inconsiderate parking by parents around the school.